

BATCH MODULAR COATER (BMC)



RECOMMENDED FOR TREATING ALFALFA, CANOLA,
CORN, SOYBEAN, SUGAR BEET, SUNFLOWER SEED

BMC Laboratory Treater

The Batch Modular Coater (BMC) is designed for small seed lot treating and for scaleup samples of commercial runs. Utilizes the same seed and chemical mixing process as the commercial CBT treaters.

Features & Benefits

- Mechanical weighing scale for improved accuracy
- Atomizer Motor
- Dust evacuation port on the bowl
- Clear Bowl Cover for easy viewing and maintenance
- Internal atomizer for optimized treatment-to-seed coverage
- Bowl Motor (not shown)
- Control Box with PLC display, Pump Controls (up to 2 pumps)
- Closed calibration pumps for accurate metering of liquid product



AUTOMATIC TREATER SIZE

- Height 86.36"

VALUE ADDED FEATURES

- Rolling Frame with locking casters



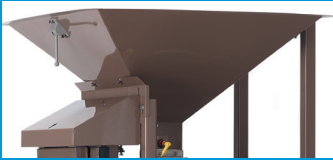
Bayer SeedGrowth™

ACCESSORY DIMENSIONS: HEIGHT 86.36" WIDTH 37.92" LENGTH 51.88"



1) Modular Mixing Bowls

- Small (8 oz–2 lb)
- Medium (2–5 lb)
- Large (5–7.5 lb)



2) Weigh Scale

- Scale inlet hopper
- Precision balance scale
- Batch hopper



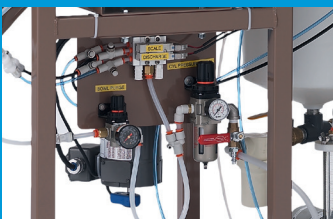
3) Control Panel

- Atomizer motor
- Pump motor
- Bowl motor
- Powder motor
- Vibrator motor
- PLC Display Screen
- Bowl Speed Micro Tachometer Display



4) Pump & Calibration System

- Tank agitation GEAR MOTOR
- L/S PUMP with Control
- 100 ml Closed Calibration



5) Air Plumbing Assembly

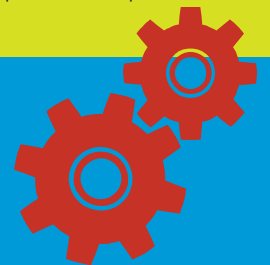
- Scale
- Bowl discharge
- Bowl purge
- Bowl vent
- Air requirements: 80 psi



VALUE ADDED OPTION

MANUAL MIXING CART

- Rolling table
- Locking casters
- One mixing bowl (S,M or L)
- Control panel
- Ideal for setting up batch recipes



Bayer

Crop Science Division
1451 Dean Lakes Trail
Shakopee, Minnesota 55379 - USA
www.seedgrowth.bayer.com
Phone: +1 952 445 6868
Toll Free: 1 855 363 3152
E-mail: equipment@bayer.com



Before using any crop protection product you should read and carefully follow directions, cautionary statements, and other information appearing on the product label.

Our technical information is based on extensive testing and is, to the best of our current knowledge, true and accurate but given without warranty as the conditions of use and storage are beyond our control. Descriptions and property data of the product do not contain any statement as to liability for possible damage.

SGRBMC09112017